

## Dangers and hazards on the roads

It is important to be aware of dangers and hazards on the roads. Make sure you know the rules of the road, recognise and obey all road signs and light signals.

### Weather

- Bad weather can make it difficult to see and be seen
- Wet roads make it harder for cars to stop quickly
- Snowy, icy conditions make pavements slippery and dangerous for pedestrians and roads hazardous for cyclists and drivers.

### Pavements

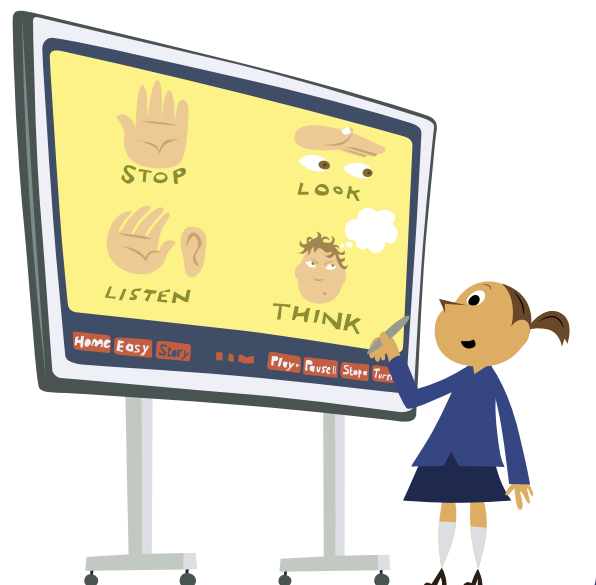
- Often pavements can be broken or uneven and you need to take care not to trip and fall into the road
- If walking, be considerate to other pedestrians by leaving enough space for them to walk by comfortably and not be forced to have to step off onto the road
- If there are no pavements, walk in single file next to the verge, facing oncoming traffic.

### Roadworks

- Make sure you look out for roadworks and if you are on the pavement check carefully before stepping into the road to get around them.

### Crossings

- If you are at a Pelican or Toucan crossing, never cross until the steady 'green man' shows even if other people do. Never start to cross the road if the 'green man' is flashing.



## Dangers and hazards on the roads

### Parked Vehicles

- Parked vehicles can block your view of the traffic and the roads and also block the driver's view of you
- Try not to cross between parked cars especially if there is a safer place to cross nearby
- If you have to, check the car isn't about to reverse, then go to the outside edge of the car and stop – use it like the kerb to look and listen before you cross.

### Reversing Vehicles and Driveways

- When drivers reverse their vehicles, they may not always see you, so you must always look out for reversing lights and take extra care not to cross when a car is reversing into the road or into a driveway.

### Emergency Vehicles

- Ambulances and police cars often drive quickly to emergencies and can drive through red lights. You will often see other vehicles moving out of the way to let them pass. Always take extra care when you hear an ambulance or police car siren, you must never try to cross the road even when the 'green man' is showing. Stop look and listen and check it's clear before crossing.

